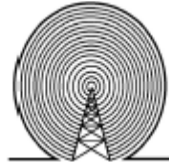


# The Ham Arundel News



Providing Fellowship and Community Service through Amateur Radio Since 1951

*Field Day 2018*

*39<sup>th</sup> Year of Publication*

2018

Grid Chase!



Everyone Is Welcome June 24, and 25, 2018  
Come and see how the  
***Maidenhead Locator works***

## 2018 ARRL Field Day – June 23-24

**Field Day is ham radio's open [house](#).** Every June, more than 40,000 hams throughout North America set up temporary transmitting stations in public places to demonstrate ham radio's science, skill and service to our communities and our nation. It combines public service, emergency preparedness, community outreach, and technical skills all in a single event. Field Day has been an annual event since 1933, and remains the most popular event in ham radio.

### Objective-

To work as many stations as possible on any and all amateur bands (excluding the 60, 30, 17, and 12-meter bands) and to learn to operate in abnormal situations in less than optimal conditions. Field Day is open to all amateurs in the areas covered by the ARRL/RAC Field Organizations and countries within IARU Region 2. DX stations residing in other regions may be contacted for credit, but are not eligible to submit entries.

This year, many groups and participants may choose to combine **2018 Field Day** with our yearlong operating event - **2018 ARRL International Grid Chase** (IGC) - working stations in as many grid squares as possible and uploading log data to ARRL's Logbook of The World (LoTW)

For **2018 Field Day** and the IGC, the standard event exchange of Field Day **Class** and **Section** is still what is sent over the air. After Field Day is where your logs can count for the IGC, but you must be sure when uploading your Field Day logs to LoTW that your QSL Station Location includes your Grid Square - then LoTW takes care of the rest. Check out the Monthly ongoing results on the **IGC Leaderboard**

Want to see what **2018 Field Day** is all about? Watch our new **[2018 Field Day Public Service Announcement](#)** or view what several groups **[uploaded to Youtube](#)** from their 2017 Field Day activities.

Used with permission ARRL Field Day Website

### OPERATING TIP

# Cinco Nueve

Learn how to say your call sign in other languages to get more contacts in phone contests. If the exchange is just a signal report, you can likely get by just knowing your call sign and the letters and numbers of the target language. Try calling CQ while pointing in a suitable direction.

Used with permission The ARRL Contest Update for May 2, 2018

## Historic NSS Call Sign to be Reactivated for Naval Radio Station's 100th Anniversary

Historic US Navy call sign NSS will be reactivated during the 100th anniversary of the former Naval Radio Station in Annapolis, Maryland. Members of the US Naval Academy Radio Club (W3ADO) and the Potomac Valley

Radio Club (W3GRF) will return the historic call sign to the air during the Armed Forces Day Crossband Military/Amateur Radio Communications Test this weekend.

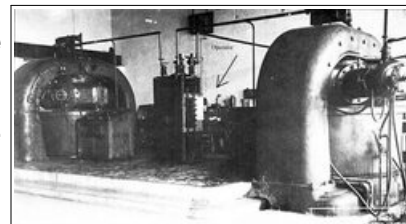
NSS operations from the site of the former Naval Radio Station on Greenbury Point will run from 1300 UTC



on Saturday, May 12 to 0200 UTC on Sunday, May 13. Transmissions on CW and SSB will take place on 4,038.5; 5,330.5; 7,533.5; 9,447; 14,487, and 17,545 kHz. NSS will listen for callers on announced frequencies in adjacent Amateur Radio bands. Commemorative QSL cards will be sent for all contacts.

NSS began operation in 1918 as the Annapolis High Power Radio Station using two Federal Telegraph Company 500 kW Poulson arc transmitters and four 600-foot towers, operating in the very low-frequency (VLF) region of the radio spectrum. At that time, VLF was believed to be the only part of the radio spectrum capable of supporting transoceanic radio communication; it would be a few more years before radio amateurs proved the major long-distance communications benefits of frequencies well above 1 MHz.

NSS began regular operation in the HF bands about 10 years later, and that continued until 1976, when the station's HF mission was transferred to Naval Radio Station (call sign NAM) in Norfolk, Virginia. The 1,200-foot central tower and dozens of other towers and masts were demolished in



**The pair of Federal Telegraph Company 500 kW Poulson arc transmitters installed at NSS-Annapolis in 1918. [US Navy photo]**

1999, although three iconic 600-foot Eiffel towers remain at the southern tip of Greenbury Point.

A [brief video history](#) of NSS is available on YouTube. The website of radio history buff Jim Hawkins, WA2WHV, also offers [a virtual tour](#) of NSS.

(Editor's Note: The most interesting part is that AARC members have been invited to take part in the NSS operation on Beach Circle in Annapolis just across the Severn River from the Naval Academy. This means you get to operate on the Military side of things. They will have 4 transmitters operation on SSB and CW from 9am to 10pm Saturday May 12th, so there will be plenty of volunteers needed. And since they operate by Military Rules, Technicians are more than welcome to come take part in this HF event.

To give you some idea, last year they made more than one-thousand QSOs in 13 hours of operation.)

Used with permission The ARRL Letter for May 10, 2018

[illegible]





## Miss Holly Laid to Rest

Friday, May 19, 2018, a number of members from the Anne Arundel Radio Club attended the services at Arlington National Cemetery for Holly Bevan, N3MP (SK).

The Navy Color Guard was tops in the pouring rain and the Chaplin spoke well of Holly's life that was shared with us.

Mike, then a member of the Maryland Mobileers, without telling his parents, signed them up for a Novice class offered by the Anne Arundel Radio Club. Mike was in the Navy then and had recently set up a MARS station aboard the vessel he was serving on. We got the benefits of Mike's actions for most of the next 40 years.

"Holly" was a lifetime member of the AARC. She was 101 years young and participated as a member for decades when she past away.

Holly was an ARRL MDC Assistant Section Manager." says Marty Prittenger, KB3MXM MDC Section Manager, ARRL.

Our thanks and appreciation for Mr. Wayne Precht, AB3RY for the photographs.

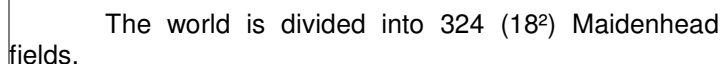




(Information from an article from Wikipedia)

The chosen coding uses alternating pairs of letters and digits, like so:

In each pair, the first character encodes longitude and the second character encodes latitude. These character pairs also have traditional names, and in the case of letters, the range of characters (or "encoding base number") used in each pair does vary.



To avoid negative numbers in the input data, the system specifies that latitude is measured from the [South Pole](#) to the [North Pole](#), and longitude measured eastward from the [antimeridian](#) of [Greenwich](#), giving the [Prime Meridian](#) a [false easting](#) of 180° and the [equator](#) a [false northing](#) of 90°.

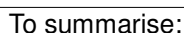
To simplify manual encoding, the base for the first pair of letters—traditionally called a *field*—was chosen to be 18, thus dividing the globe into 18 zones of longitude of 20° each, and 18 zones of latitude 10° each. These zones are encoded with the letters "A" through "R".



The second pair of numbers, called a *square* and placed after the first pair of letters, uses a base number of 10, and is encoded using the digits "0" to "9". This is where the alternative name "grid squares" comes from. Each of these squares represents 1° of latitude by 2° of longitude.

The resulting Maidenhead subsquare locator string is hence composed of two letters, two digits, and two more letters. To give an example, W1AW, the [American Radio Relay League's Hiram Percy Maxim Memorial Station in Newington, Connecticut](#), is found in grid locator [FN31pr](#). Two points within the same Maidenhead subsquare are always less than 12 km (7.5 mi) apart, which means a Maidenhead locator can give adequate precision from only six easily transmissible characters.

For even more precise location mapping, two additional digits were proposed and ratified as an *extended locator*, making it altogether eight characters long, and dividing *subsquares* into even smaller ones. Such precision has uses in very short communication spans. Beyond this, no common definition exists to extend the system further into even smaller squares. Most often the extending is done by repeating alternating subsquare and square rules (base numbers 24 and 10 respectively). However, other bases for letter encodings have also been observed, and therefore such *extended extended* locators might not be compatible.



- Character pairs encode longitude first, and then latitude.
- The first pair (a *field*) encodes with base 18 and the letters "A" to "R".
- The second pair (*square*) encodes with base 10 and the digits "0" to "9".
- The third pair (*subsquare*) encodes with base 24 and the letters "a" to "x".
- The fourth pair (*extended square*) encodes with base 10 and the digits "0" to "9".
- The fifth and subsequent pairs are not formally defined, but recycling the third and fourth pair algorithms is one possible definition:

**BL11bh16oo66**

On shortwave frequencies, positions are reported at *square* precision, and on VHF and UHF, *subsquare* precision is used. More precise position reports are very rarely used.

[illegible]



## UPCOMING HAMFESTS

This is a list of hamfests in the Maryland-DC Section area. I am including hamfests in nearby Pennsylvania, northern Virginia, West Virginia and Delaware as a courtesy to our neighboring Section Managers.

I, as your MDC Section Manager, Marty Pittinger, KB3MXM, and/or a designated ARRL representative(s), plan to attend all hamfests in the ARRL Maryland-DC Section.

We hope to see you all there.

## Harrisburg Radio Amateurs Club Firecracker Hamfest

Date: Saturday, June 30, 2018

Location: Harrisburg Area Community College,  
Harrisburg, PA

Sponsor: Harrisburg Radio Amateurs Club

For more info, click on: <[www.w3uu.org](http://www.w3uu.org)>

## 68th Annual Berryville Hamfest

Date: Sunday, August 5, 2018

Sponsor: Shenandoah Valley Amateur Radio Club

Location: Clarke County Ruritan Fairgrounds,  
Berryville, VA

Website: <http://www.svarc.us/hamfest>

## Pennsylvania State Convention (Uniontown Gabfest)

Date: Saturday, September 01, 2018

Location: Uniontown ARC Clubhouse, Uniontown, PA

Sponsor: Uniontown Amateur Radio Club

For more info, click on: <http://www.w3pie.org>

## Virginia Beach Hamfest

Date: Saturday, September 8, 2018

Location: Virginia Beach Convention Center,  
Virginia Beach, VA

For more info, click on:

<http://virginiabeachhamfest.com>

## CARAfest

Date: Sunday, October 7, 2018

Location: Howard County (Maryland) Fairgrounds

Sponsor: Columbia Amateur Radio Association

For more info, click on: <http://www.carafest.org>

## Third Annual SantaFest

Date: Saturday, December 8, 2018

Location: American Legion Youth Camp,  
Cheltenham, MD

Sponsor: Prince George's County Emergency Radio Association & American Legion

For more info, click on: <http://pgares.org/santafest>

Used with permission MDC Section News June 14, 2018

[illegible]

Hams in any area affected by inclement or severe weather are reminded to check the health and welfare of their neighbors, especially those that are handicapped or are elderly.

**It is advisable to have your emergency services contact information available.**

**Keep it updated and near at hand.**



## AARC Mesh Networking Group

**1:00 to 4:00 PM monthly,**

**on the 3rd Sunday of the month**

**AARC Clubhouse, Davidsonville, MD**  
(Next Meeting will be July 22, 2018)



# W1AW 2018 Spring/Summer Operating Schedule

## Morning Schedule:

Time	Mode	Days
-----	----	-----
1300 UTC (9 AM ET)	CWs	Wed, Fri
1300 UTC (9 AM ET)	CWf	Tue, Thu

## Daily Visitor Operating Hours:

1400 UTC to 1600 UTC - (10 AM to 12 PM ET)  
1700 UTC to 1945 UTC - (1 PM to 3:45 PM ET)

**(Station closed 1600 to 1700 UTC (12 PM to 1 PM ET))**

## Afternoon/Evening Schedule:

2000 UTC (4 PM ET)	CWf	Mon, Wed, Fri
2000 " "	CWs	Tue, Thu
2100 " (5 PM ET)	CWb	Daily
2200 " (6 PM ET)	DIGITAL	Daily
2300 " (7 PM ET)	CWs	Mon, Wed, Fri
2300 " "	CWf	Tue, Thu
0000 " (8 PM ET)	CWb	Daily
0100 " (9 PM ET)	DIGITAL	Daily
0145 " (9:45 PM ET)	VOICE	Daily
0200 " (10 PM ET)	CWf	Mon, Wed, Fri
0200 " "	CWs	Tue, Thu
0300 " (11 PM ET)	CWb	Daily

## Frequencies (MHz)

**CW:** 1.8025 3.5815 7.0475 14.0475 18.0975  
21.0675 28.0675 50.350 147.555  
**DIGITAL:** - 3.5975 7.095 14.095 18.1025 21.095 28.095  
50.350 147.555  
**VOICE:** 1.855 3.990 7.290 14.290 18.160 21.390  
28.590 50.350 147.555

## Notes:

CWs = Morse Code practice (slow) = 5, 7.5, 10, 13 and 15 WPM

CWf = Morse Code practice (fast) = 35, 30, 25, 20, 15, 13 and 10 WPM

CWb = Morse Code Bulletins = 18 WPM

CW frequencies include code practices, Qualifying Runs and CW bulletins.

DIGITAL = BAUDOT (45.45 baud), BPSK31 and MFSK16 in a revolving schedule.

Code practice texts are from QST, and the source of each practice is given at the beginning of each practice and at the beginning of alternate speeds.

On Tuesdays and Fridays at 2230 UTC (6:30 PM ET), Keplerian Elements for active amateur satellites are sent on the regular digital frequencies.

A DX bulletin replaces or is added to the regular bulletins between 0000 UTC (8 PM ET) Thursdays and 0000 UTC (8 PM ET) Fridays.

Audio from W1AW's CW code practices, and CW/digital/phone bulletins is available using **EchoLink** via the W1AW Conference Server named "W1AWBDCT." The monthly W1AW Qualifying Runs are presented here as well. The CW/digital/phone audio is sent in real-time and runs concurrently with W1AW's regular transmission schedule.

All users who connect to the conference server are muted. Please note that any questions or comments about this server should not be sent via the "Text" window in EchoLink. Please direct any questions or comments to [w1aw@arrrl.org](mailto:w1aw@arrrl.org).

In a communications emergency, monitor W1AW for special bulletins as follows: Voice on the hour, Digital at 15 minutes past the hour, and CW on the half hour.

FCC licensed amateurs may operate the station from 1400 UTC to 1600 UTC (10 AM to 12 PM ET), and then from 1700 UTC to 1945 UTC (1 PM to 3:45 PM ET) Monday through Friday. Be sure to bring your current FCC amateur license or a photocopy.

The complete W1AW Operating Schedule may be found on page 90 in the March 2018 issue of QST or on the web at <http://www.arrrl.org/w1aw-operating-schedule>.

Used with permission ARRL Bulletin 8 ARLB008 March 12, 2018

\*\*\*\*\*

**The Anne Arundel Radio Club  
is a registered 501C3 charity.**

**We are pleased to receive any  
donations over your yearly dues.**



The *Ham Arundel News* is the monthly official publication of

The Anne Arundel Radio Club, Inc.  
(ARRL Club No. 0484).

**Editor: Milford Craig / N3WYG**

Send newsletter articles, questions and information to **Milford** at [newsletter@w3vpr.org](mailto:newsletter@w3vpr.org)  
Deadline for submissions – The Saturday after the 3rd Thursday of the month

**Mailing Address:**

Anne Arundel Radio Club  
Post Office Box 308  
Davidsonville, MD 21035

**Meetings:**

General Business 1st Thursday at 7:30 PM  
Board Meeting 2nd Thursday at 7:30 PM  
Program/Activity 3rd Thursday at 7:30 PM

**Dues:**

\$30 per year, payable December 1st  
Discounts available for family members and students

**World Wide Web:** [www.w3vpr.org](http://www.w3vpr.org)

**AARC Supports The Maryland Slow Net:  
3.563 MHz CW 7:30 P. M. Daily**

**Free Money for AARC!  
ARRL Membership Reminder**

ARRL affiliated clubs receive a commission for every new ARRL membership and renewal they submit to ARRL Headquarters. Clubs retain a portion of the dues for each regular or senior membership submitted to ARRL Headquarters:

Clubs retain \$15 for each new membership OR lapsed membership (of two years or more).  
Clubs retain \$2 for each renewal,  
A RENEWING MEMBER can renew at any time, even before their current membership expires.

Send your application and payment (made out to AARC) to the club treasurer.



## Mark Your Calendars

### REGULAR ACTIVITIES

**Club Meetings** are held on the first and third Thursdays of the month from 7:30 to 9PM at the clubhouse located at the Davidsonville Family Recreation Center in Davidsonville, MD **Free License Exams** every 2nd Saturday of the Month - Check in at Noon, Exams at 1PM - At the clubhouse - Contact Steve/K3BAY [k3bay@w3vpr.org](mailto:k3bay@w3vpr.org)

**Weekly AARC 2-Meter Net** on 147.105 (Typically linked to 147.075 and 444.400) every Wednesday at 8 PM - All Welcome

**2 meter Morning Commuter Net** on 147.105 (Typically linked to 147.075 and 444.400) every morning 6:30 am to 9:00 am.

### EVENT SCHEDULE

**Sunday, July 1 1:00pm**  
AARC (new date) Kit-building, troubleshooting and repair, at 1 to 4 PM at the clubhouse  
**Wednesday, July 4 8:00pm**  
AARC (on-air) 2-Meter net every Wednesday night  
**Thursday, July 5 7:30pm**  
AARC - Club meeting, newcomers are always welcome.  
**Sunday, July 8 6:00am**  
AARC (support) METAvivior - Kayak, Run, Bike  
**Wednesday, July 11 8:00pm**  
AARC (on-air) 2-Meter net every Wednesday night  
**Thursday, July 12 7:30pm**  
AARC - board meeting  
**Saturday, July 14 12:00pm**  
AARC - Free License Exams  
**Sunday, July 15 1:00pm**  
AARC - Mesh Networking group, at 1 to 4 PM at the clubhouse  
**Wednesday, July 18 8:00pm**  
AARC (on-air) 2-Meter net every Wednesday night  
**Thursday, July 19 7:30pm**  
AARC - Club meeting, newcomers always welcome.  
**Sunday, July 22 6:00am**  
AARC (support) Rosaryville Trail Run, 10k, 10M, 25k, 50k  
1:00pm  
AARC Kit-building, troubleshooting and repair, at 1 to 4 PM at the clubhouse  
**Wednesday, July 25 8:00pm**  
AARC (on-air) 2-Meter net every Wednesday night



# Repeaters and Nets

## 2 Meter Repeaters

Location	Frequency	Tone	Notes
Davidsonville	147.105+	107.2	AARC Repeater with morning traffic net.
Glen Burnie	147.075+	107.2	AARC repeater Located in Northern AA County.
BrandyWine	147.150+	114.8	SMARC Repeater.
Prince Frederick	145.350-	156.7	SPARC/CARC Repeater.
Laurel	147.225+	156.7	Laurel ARC Repeater.
Millersville	146.805-	107.2	Repeater.

## 1.25 Meter Repeaters

Location	Frequency	Tone	Notes
Davidsonville	223.880-	107.2	AARC 1.25M repeater *check to see if tied into 7.105...
Millersville	224.560-	107.2	AARC repeater Located in Northern AA County.

## 70cm Repeaters

Location	Frequency	Tone	Notes
Davidsonville	444.400+	107.2	AARC 70 cm Repeater.
Annapolis	442.300+	107.2	AARC 70 cm repeater
Laurel	442.500+	156.7	Laurel ARC 70 cm Repeater.
Millersville	449.125-	107.2	<a href="#">Maryland Mobileers</a> Repeater.
Upper Marlboro	443.600+	103.5	SMARC 70 cm Repeater.

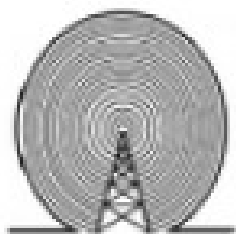
## Packet Stations

Location	Frequency	Call	Notes
Davidsonville	145.050	W3VPR	AARC Club packet node running JNOS
Davidsonville	145.010	W3VPR-5	Digipeter Relay to EOC Winlink
Millersville	145.010	W3AAC-5	Digipeter Relay to EOC Winlink
Glen Burnie	145.010	W3AAC-10	EOC Winlink system and digipeter

## Amateur Radio nets

Name	Frequency (in Mhz)	Day	Time
Morning Commuter Net	147.105+ PL 107.2	Weekdays	0600
AARC Talk Net	147.105+ PL 107.2	Wednesday	2000
AA County ARES Net	146.805- PL 107.2	Sunday	2000
Baltimore Traffic Net	146.670-	Daily	1830
Boating Net	146.805- PL 107.2	Wednesday	1930
Maryland Emergency Phone Net	3.920	Daily	1800
Maryland-DC-Delaware Traffic Net	3.643	Daily	1900 and 2200
<u>Maryland Slow Net</u>	3.563	Daily	1930
React Net	442.300+ PL 107.2	1st Sunday	1930

We use **simplex 146.430 Mhz** frequently enough that you should probably program that into your HT or mobile. This is the go-to frequency for many 5K race/walk volunteering efforts, local communication, Field Day setup, and the like when we're not using a repeater.



## **AARC Two-Meter Net Controller Schedule — 2018**

01/03/18	KB3ZYO	Rich	07/04/18	K3MAW	Mike
01/10/18	KB3MUV	Raven	07/11/18	AA3EB	Ed
01/17/18	K3ACT	Chuck	07/18/18	KB3ZYO	Rich
01/24/18	W3KNH	Jamison	07/25/18	KB3MUV	Raven
01/31/18	KB3YQK	Tim			
			08/01/18	K3ACT	Chuck
02/07/18	K3MAW	Mike	08/08/18	W3KNH	Jamison
02/14/18	AA3EB	Ed	08/15/18	KB3YQK	Tim
02/21/18	KB3ZYO	Rich	08/22/18	K3MAW	Mike
02/28/18	KB3MUV	Raven	08/29/18	AA3EB	Ed
03/07/18	K3ACT	Chuck	09/05/18	KB3ZYO	Rich
03/14/18	W3KNH	Jamison	09/12/18	KB3MUV	Raven
03/21/18	KB3YQK	Tim	09/19/18	K3ACT	Chuck
03/28/18	K3MAW	Mike	09/26/18	W3KNH	Jamison
04/04/18	AA3EB	Ed	10/03/18	KB3YQK	Tim
04/11/18	KB3ZYO	Rich	10/10/18	K3MAW	Mike
04/18/18	KB3MUV	Raven	10/17/18	AA3EB	Ed
04/25/18	K3ACT	Chuck	10/24/18	KB3ZYO	Rich
			10/31/18	KB3MUV	Raven
05/02/18	W3KNH	Jamison	11/07/18	K3ACT	Chuck
05/09/18	KB3YQK	Tim	11/14/18	W3KNH	Jamison
05/16/18	K3MAW	Mike	11/21/18	KB3YQK	Tim
05/23/18	AA3EB	Ed	11/28/18	K3MAW	Mike
05/30/18	KB3ZYO	Rich			
06/06/18	KB3MUV	Raven	12/05/18	AA3EB	Ed
06/13/18	K3ACT	Chuck	12/12/18	KB3ZYO	Rich
06/20/18	W3KNH	Jamison	12/19/18	KB3MUV	Raven
06/27/18	KB3YQK	Tim	12/26/18	K3ACT	Chuck

# REPEATER FREQUENCIES

Davidsonville	Millersville	Glen Burnie	Annapolis
147.105+		147.075+	
223.880-	224.560-		
444.400+			442.300+

## PL: 107.2 for all repeaters

The 147.105 and 147.075 repeaters are frequently linked. Please leave an extra second after the courtesy beep to allow the link to reset as well.

**Visitors are welcome to all meetings and nets.**

*Meetings are held in the Clubhouse at the  
Davidsonville Family Recreation Center,  
Queen Anne Bridge and Wayson Roads off  
MD Route 214 near Davidsonville, MD.*

*For en-route directions, make initial contact on the 147.105 repeater.*

**Copyright © 2011 Anne Arundel Radio Club**



## Wednesday Night Talk Net -- All are welcome

8PM, On the AARC Repeater 147.105

### Other Amateur Radio nets

Name	Frequency	Day	Time
Morning Commuter Net	147.105+Mhz PL 107.2	Weekdays	0600
AA County ARES Net	146.805- Mhz PL 107.2	Sunday	2000
Baltimore Traffic Net	146.670- Mhz	Daily	1830
Maryland Emergency Phone Net	3.820Mhz	Daily	1800
MD-DC-DE Traffic Net	3.557Mhz	Daily	1900 and 2200
Maryland Mobileers Net	146.805 PL107.2	Monday	1930
Maryland Slow Net	3.563 MHz	Daily	1930
REACT Net	442.300+Mhz PL107.2	1st Sunday	1930



# The Radio Amateur Operator is...

## **CONSIDERATE**

...He/[She] never knowingly operates in such a way as to lessen the pleasure of others.

## **LOYAL**

...He/[She] offers loyalty, encouragement and support to other amateurs, local clubs, the IARU Radio Society in his/[her] country, through which Amateur Radio in his/[her] country is represented nationally and internationally.

## **PROGRESSIVE**

...He/[She] keeps his/[her] station up to date. It is well-built and efficient.  
His/[Her] operating practice is above reproach.

## **FRIENDLY**

...He/[She] operates slowly and patiently when requested; offers friendly advice and counsel to beginners; kind assistance, cooperation and consideration for the interests of others. These are the marks of the amateur spirit.

## **BALANCED**

...Radio is a hobby, never interfering with duties owed to family, job, school or community.

## **PATRIOTIC**

...His/[Her] station and skills are always ready for service to country and community.

*- adapted from the original Amateur's Code, written by Paul M. Segal, W9EEA, in 1928The Radio Amateur's Code*